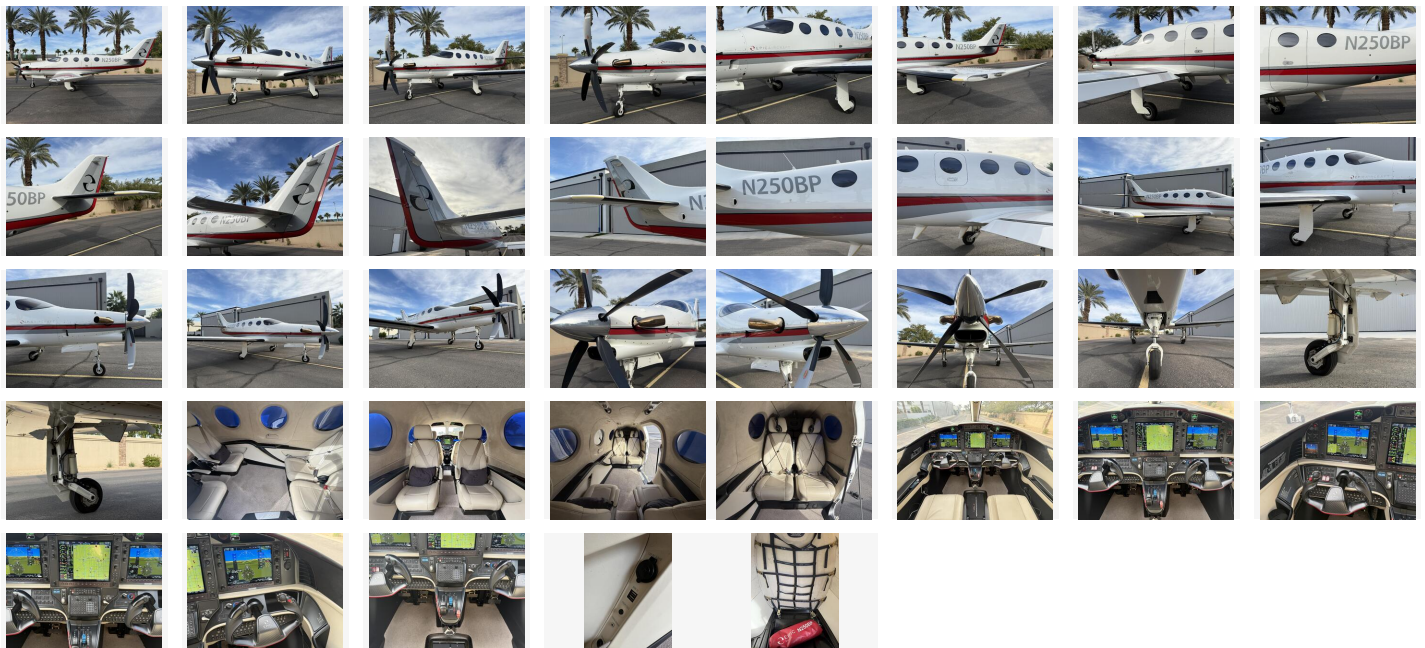


Epic E1000 GX

\$3,850,000



Listing

Listing url: <https://aircraftforsale.com//aircraft/turboprop/epic/e1000-gx/85260-scottsdale-arizona-united-states/epic-e1000-gx-for-sale-600432>
Listing reference number #600432

Seller

Southwest Aero
Phone: +1 (480) 915-5026

Quick info

Listing type: For sale

Epic E1000 GX

\$3,850,000

Description

2021 Epic E1000 GX Equipped with Garmin G1000 NXi Avionics Suite, Garmin GFC700 Autopilot, Active Traffic, Synthetic Vision, XM Weather, FlightStream, Known Ice Certification and more! 415 SNEW.

Add Details

Manufacturer year: 2021**Serial number:** K018**Registration number:** N250BP**Total airframe time:** 415

Additional information

Airframe:

415 SNEW
2850 Lb Useful Load
RVSM Capable, with Operator Approval

Propulsion:

Engine

415 SNEW
Pratt & Whitney PT6A-67A Turboprop
- Rated at 1200 SHP / 1000 SHP Continuous
- 3500 TBO / 1750 HSI
- Torque Limiter and Propeller Over-Speed Limiter for Easier Operations

Propeller

415 SNEW
Hartzell 5-Blade Composite Propeller
Full Feathering and Reversible Pitch
Electrically De-Iced

Inspection:

Annual Due April 2026

Avionics:

Garmin G1000 NXi Integrated Flight Deck
Garmin GFC-700 Digital Autopilot with Flight Director, Yaw Damper, Automatic and Manual Trim, Coupled
Go-Around. Emergency Descent Protection. Stall Protection System, Stick Shaker/Pusher
Flight Stream 510 Transceiver
SVT - Synthetic vision Technology
GTS 825 Traffic Advisory System (TAS) with ADS-B TIS-B In
XM Weather / Digital Audio Radio Entertainment
Dual 406MHz and 121.5MHz ELTs with Built In GPS
Dual Heated Pilot and Static Systems
Pre-Takeoff Configuration Check - 10 Key Checks

Epic E1000 GX

\$3,850,000

Additional equipment:

- All Carbon Fiber Airframe
- Factory Air Conditioning
- Trailing Link Landing Gear with Hydraulic Disk Brakes
- 40 cu/ft Factory Oxygen System
- Emergency Exit Door
- Electrically Dimming Windows
- USB Ports / Lemo Headset Jacks
- Pneumatic Main Door Seals
- Courtesy and Accent Lighting
- Crew Call System
- Baggage Department In Rear Of Cabin

FIKI - Known Ice Certification

As part of the FIKI approval the wing deice boots are replaced with new RH/LH boots plus an intake boot is installed on the engine intake. A full flight series is completed with stalls and handling characteristics reviewed before return to service.

Interior:

Six-place Gray Leather Interior - Spacious 4-Club Cabin with extended head and leg room - reclining leather seats
Comfortable Pressurized Cabin with a 6.6 PSI Differential

Exterior:

All Over White with Grey, Red and Black Accent Stripes.

Remarks:

Annual Due April 2026
Always Hangared / No Damage History / Complete Logs
Hangared in Chandler, AZ (Stellar Airpark P19)

Epic E1000 GX

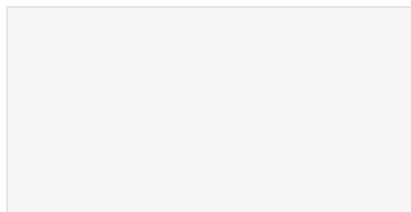
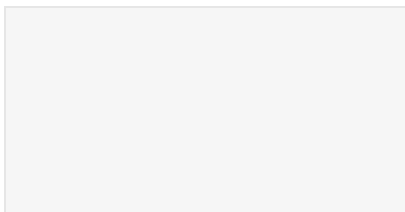
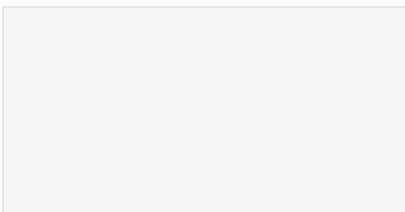
\$3,850,000

Listing images



Epic E1000 GX

\$3,850,000



Epic E1000 GX

\$3,850,000

