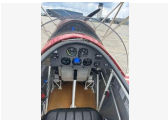
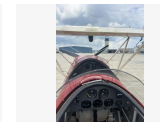


## Great Lakes 2T-1A-2

**\$390,000**



### Listing

**Listing url:** <https://aircraftforsale.com//aircraft/single-engine-piston/great-lakes/2t-1a-2/49015-battle-creek-michigan-united-states/great-lakes-2t-1a-2-for-sale-600360>

**Listing reference number** #600360

### Seller

WACO Aircraft Corporation  
Phone: +1 (269) 215-5076

### Quick info

**Listing type:** For sale

## Great Lakes 2T-1A-2

**\$390,000**

### Description

Newly manufactured 2T-1A-2 Great Lakes by WACO is hand-built by experienced craftsmen to achieve the highest quality with robust, corrosion-resistant welded steel-tube structure; two staggered wings, one swept; and two open cockpits. The 2T-1A-2 modern design and safety standards with all-weather fabric skins, cockpit covers, cabin heater, and toe brakes.

This is your adventure – to go wherever you want to go, to see whatever you want to see with the exhilaration of inverted flight and the ability to handle +5.4 / -4.0.

In the Great Lakes by WACO, you have the controls to explore unrestricted movement in three dimensions. You are no longer just a pilot when you fly a Great Lakes, you are an aviator. You have joined the legacy of stick and rudder grassroots aviation as you soar through the skies in a biplane built entirely by the hands of artisans in Battle Creek, Michigan

Your brand-new Great Lakes by WACO is hand crafted aircraft based on the original type certificate, with hundreds of advancements to increase performance, comfort and safety  
Call now to schedule your demo flight!

### Add Details

**Manufacturer year:** 2021**Serial number:** 1215**Registration number:** N100GL**Total airframe time:** 75**Passenger capacity:** 2**Wifi:** No

## Great Lakes 2T-1A-2

**\$390,000**

### Additional information

#### Propulsion:

LYCOMING AEIO-360-B1G6

180HP

#### Avionics:

Front

- Garmin GI 275 - MFD
- Garmin GI 275 - EIS
- Dual USB Port

Rear

- Garmin GI 275 - MFD
- Garmin GI 275 - ADI
- Garmin GI 275 - EIS
- MGL Vega INFO-1 G-Meter
- Trig TY91 COM Radio
- Garmin GTX 345R ADS-B In/Out Remote Transponder

#### Interior:

- Hand Crafted Leather Seats
- Teak and Holly floor
- Hooker Safety Harnesses

#### Exterior:

- The red and cream paint scheme pays homage to the original 1930s iconic design

---

### Request A PDF Option

**Pdf option:** Yes

---

## Great Lakes 2T-1A-2

**\$390,000**

### Listing images

