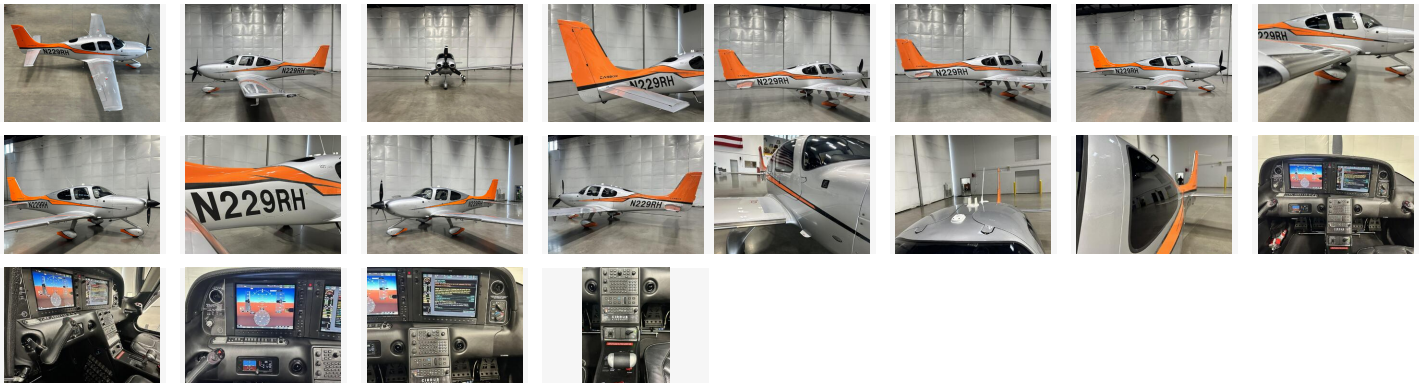


2015 Cirrus SR22T G5

\$674,900



Listing

Listing url: <https://aircraftforsale.com//aircraft/single-engine-piston/cirrus/sr22t-g5/seattle-wa-usa/2015-cirrus-sr22t-g5-for-sale-600595>
Listing reference number #600595

Seller

Aerista
Phone: +1 (888) 658-0708

Quick info

Location: Seattle, WA | **Listing type:** For sale

2015 Cirrus SR22T G5

\$674,900

Description

Sterling paint. Orange accents. 440 hours. Fresh cylinders, CAPS, and annual.

N229RH is the SR22T that makes pilots stop and stare—bold Sterling-and-Orange styling wrapped around a low-time, turbocharged performer with six brand-new cylinders and only 450 total hours.

With a fresh CAPS repack and fresh annual, it's turnkey and ready for serious missions. And as a G5, it delivers one of the biggest upgrades in the SR22 line: 200 pounds more useful load than earlier generations. That means more people, more bags, more range—without compromise.

Combine that with the SR22T's climb performance and high-altitude efficiency, and you get a machine built to go fast, go far, and look incredible doing it.

N229RH isn't just an airplane—it's your lifestyle, upgraded.

Luke at Aerista is your go-to resource for all things Cirrus, offering expert guidance on training, insurance, financing, and aircraft performance to support every step of your ownership journey.

FREE transition training (Cirrus Embark) included with the purchase of your Cirrus from Aerista.

Add Details

Manufacturer year: 2015

Serial number: 1113

Registration number: N229RH

Total airframe time: 440

2015 Cirrus SR22T G5

\$674,900

Additional information

Airframe: 2015 Cirrus SR22T GTS - "Generation 5"
440 Hours TTSN (Flight)

Inspection: Annual Inspection Completed November 2025

CAPS Repack due 2035

**All specifications subject to verification by purchaser

Avionics: Cirrus Perspective by Garmin Avionics Suite

Dual WAAS-enabled GPS

Dual AHARS

Dual Air Data Computer

Garmin SVT - Synthetic Vision Technology

Garmin 12-inch LCD Displays

Garmin ChartView (Powered by Jeppesen)

Engine & Fuel Monitoring

Garmin SafeTaxi

Perspective Enhanced Vision System (EVS)

Garmin GFC-700 Digital Autopilot

Yaw Damper

Flight Director

Garmin ESP - Electronic Stability Protection

Garmin GMA-350 All-Digital Audio Panel

Garmin GTX 33 w/ES Transponder (ADS-B Out)

Garmin Active Traffic System

Stormscope Lightning Detection System

Garmin Perspective Global Connect

Enhanced Ground Proximity Warning System

Digital 4-in-1 Standby Instrument

Additional equipment: TKS Known Ice Protection System (FIKI)

Cirrus Airframe Parachute System (CAPS)

Factory Installed Air Conditioning

AmSafe Crew Seat Airbag Restraints

Precise Flight 77-Cubic Foot Fixed Oxygen System

Whelen LED Landing/Wingtip Lights

Surface Illumination Lights (Ice Lights)

Beringer Brakes

Tubeless Tires

Tanis Engine Pre Heater 230

UV Protected Windows

Tinted Windows

Leading Edge Protectant

Black Spinner

406 MHz ELT

Rosen Sun Visors

Carbon Sterling Silver with Tangerine Orange Exterior

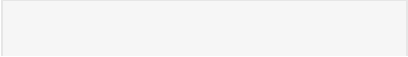
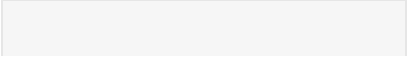
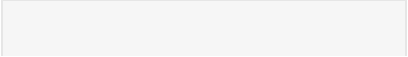
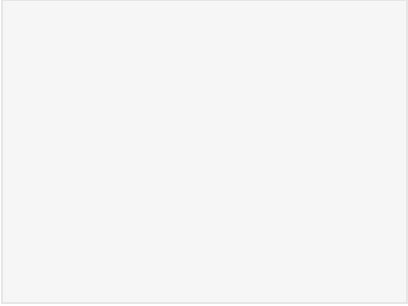
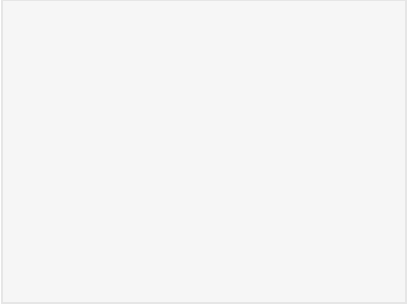
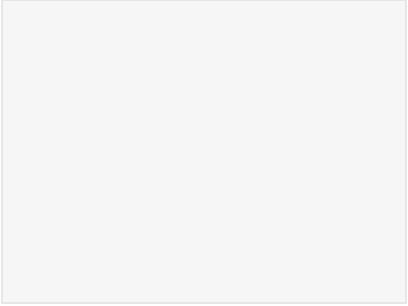
Carbon Slate Leather Interior

60/40 Flex Seating

2015 Cirrus SR22T G5

\$674,900

Listing images



2015 Cirrus SR22T G5

\$674,900

