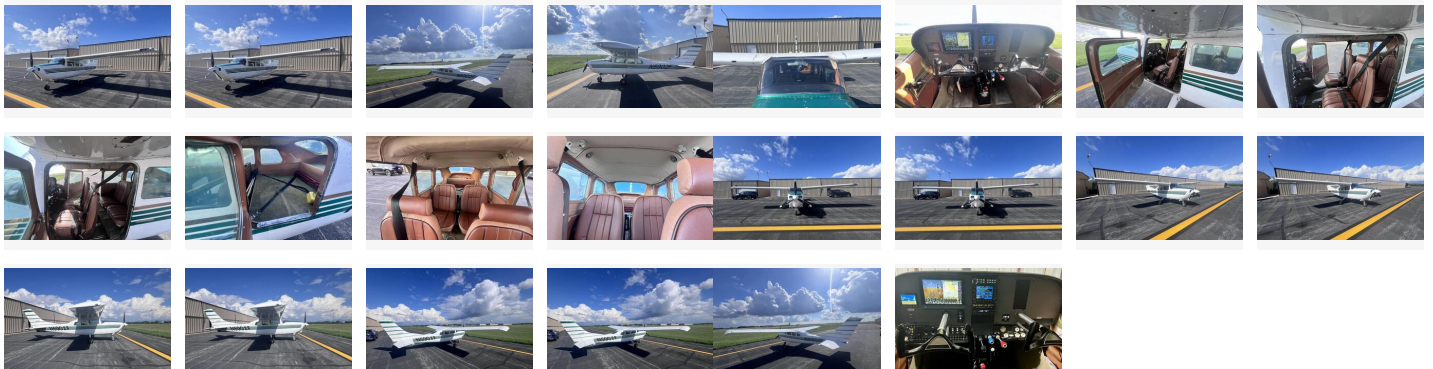


Cessna 210G Centurion

\$180,000



Listing

Listing url: <https://aircraftforsale.com//aircraft/single-engine-piston/cessna/210g-centurion/romeoville-il-usa/cessna-210g-centurion-for-sale-501067>

Listing reference number #501067

Seller

Ken Peters
Phone: +1 (708) 528-0848

Quick info

Exterior:

<p>Exterior Condition:</p><p>Exterior: </p><p>- Exterior Base White with Green Stripes - Paint Condition - 5/10</p><p>Paint Condition Score: 5</p>

Listing type: For sale

Description

A Turn-Key Cross Country Machine with a Glass Panel and Strong Mid-Time Engine.

Cessna 210G Centurion

\$180,000

Add Details

Manufacturer year: 1967**Serial number:** 21058902**Registration number:** N5902F**Total airframe time:** 2733

Additional information

Airframe:**Airframe Description:**

Due to a growing family living in the midwest and use of the aircraft for business travel, my mission has changed which at this point means I need to transition into a twin. That leads me to the posting of this aircraft that has treated my family and I very well over the past 3 years. I've been very meticulous with this airplane since I purchased it in 2021 and it would be a great purchase for someone looking into a earlier model 210. The aircraft wants for nothing mechanically and the avionics in the aircraft make this a true cross country machine. The airplane sits with a 1400 pound useful load that cruises at 155 knots with takeoff and landing performance among the top in its class. Some of the leading particulars:

- All AD's current

- o Wing Carry-Thru Spar AD Completed in 2020. Eddy current NDT completed with no cracks found. Spar was treated and sealed.

- New brake pads in 2024

- ElectroAire EA-15000 Ignition Switch Panel Installed 2024 (No more Ignition switch AD)

- Installed new fuel senders and calibrated to the Dynon primary indication system 2024

- McFarlane Vernier Assist Throttle, Propeller Control, and Mixture Controls installed in 2021

- Lord Sealed Shimmy Dampener installed in 2023

- Whelen LED Position/Strobes on Wings and Tail

- Knots2U Wingtips with integrated Whelen LED landing lights

- Whelen Prometheus G3 LED Taxi and Landing Lights

- Door Seals Replaced in 2021

- Pilot and Co-Pilot Push-to-Talk Switches replaced with updated switches

- Windshield Replaced in 2021

- All fuses replaced with updated Klaxon breakers in 2021

- Reiff Engine Heater - Cylinder Bases and Oil Sump

Airframe Total time: 2733**Total hours flown in the past 6 months:** 30**Engine 1 hours:** 1152 SMOH**Propulsion:**

Continental IO-520A (285 HP) - 1152 Hours SMOH (1900 Hour TBO)

- GAMI Fuel Injectors

- Surefly Electronic Ignition Module in place of the RH Magneto

Cessna 210G Centurion

\$180,000

- New LH Magneto at 1080 engine hours
- Top Overhauled at 927 engine hours
- Blackstone oil samples taken since 2021. Oil trends since top overhaul show successful cylinder break in and a perfect bill of health.

Inspection:**Inspection Status:**

Annual Inspection: Last Completed July 9, 2024 – NEXT DUE August 1, 2025

100 Hour: Annual Completed 2676.3 Hobbs / 1100.0 Tach

Altimeter (91.411): Completed April 27, 2024 – NEXT DUE May 1, 2026

Transponder (91.413): Completed April 27, 2024 – NET DUE May 1, 2026

ELT (91.207): Completed June 13, 2022 – Battery Expires August 2025

Static System Test: Completed April 27, 2024 – NEXT DUE May 1, 2026

Inspection Expiry: August 1, 2025

Damage history:

Aircraft had a gear up landing in July 1993. All repair entries and 337 present.

Avionics:

Flight rules: IFR

Engine management:**Navigation equipment:**

- Dynon Skyview HDX Primary Flight Display
 - o Synthetic Vision
 - o ADSB-In Functionality with Integrated Moving Map/Approach Plates/Enroute Charts/Sectionals, Traffic and NEXRAD Weather Overlay
 - o Primary Engine Monitor Including 6 Cylinder CHT/EGT sensors, Fuel Flow, Fuel Quantity, Gear Indication, Gear Warning, Flap Position and OAT
 - PS Engineering 8000BT Audio Panel with Bluetooth and Aux Audio input
 - o 6 Place Intercom
 - Garmin GNS530W GPS Navigator
 - o Aviation and Terrain/Obstacles Data Cards included
 - Garmin SL30 VHF Com/VHF Nav
 - o Integrated with Skyview for tuning directly from the PFD
 - Garmin GTX-345 ADSB-In/Out Transponder - Bluetooth for iPad Connection
 - MidContinent Digital Clock & Dual USB Charger
- Fully Integrate Dynon Skyview HDX digital engine monitoring including:
- Manifold Pressure
 - Propeller RPM

Cessna 210G Centurion

\$180,000

-Calibrated Fuel Flow and Fuel Pressure

-6 Cylinder CHT/EGT

-Oil Pressure & Temperature

-Fuel Quantity

Additional equipment:

The aircraft will come with a like-new custom fit "Bruce Covers" fuselage wrap around cover and 12V "Battery Saver" battery maintainer/charger

Interior:

Number of seats: 4

Additional equipment: Dual-controls

Interior Condition:

Interior:

- Interior Carpet replaced 2019 with new (FAA Form 8110 Burn Certs Included)

- Seats Recovered in two tone brown leather

- Interior Overall Condition - 8/10

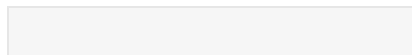
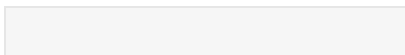
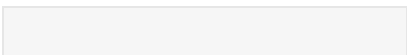
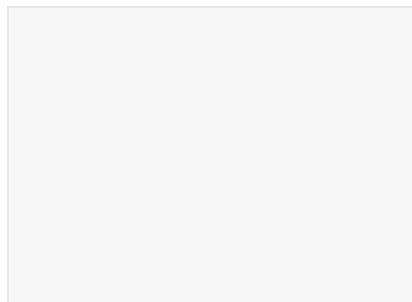
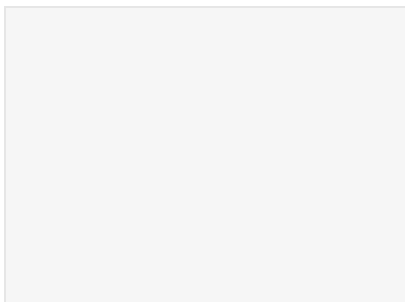
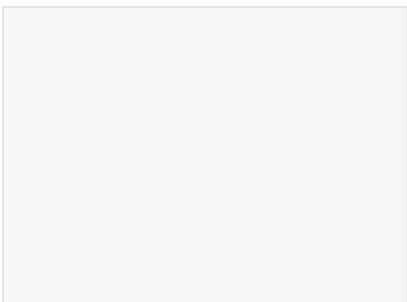
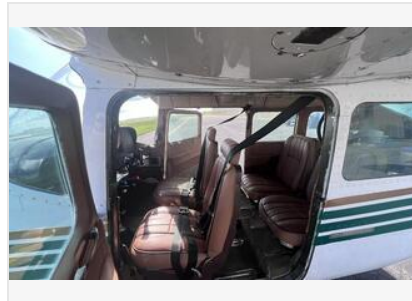
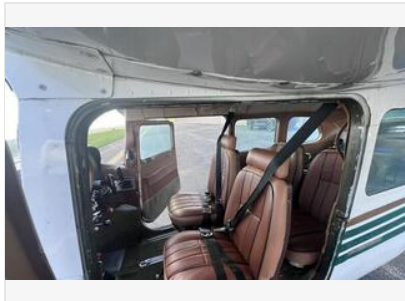
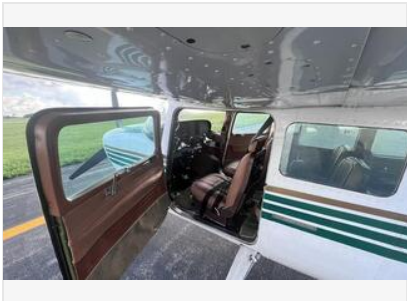
Interior Year: 2019

Interior Condition Score: 8

Cessna 210G Centurion

\$180,000

Listing images



Cessna 210G Centurion

\$180,000

