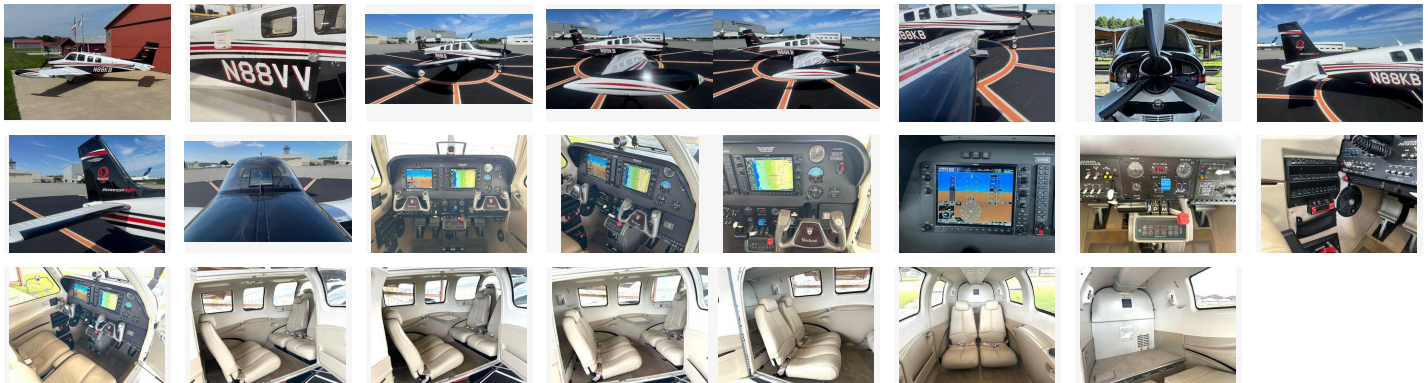


Beechcraft G36 Bonanza

\$995,000



Listing

Listing url: <https://aircraftforsale.com//aircraft/single-engine-piston/beechnraft/g36-bonanza/north-carolina-united-states/beechnraft-g36-bonanza-for-sale-600623>

Listing reference number #600623

Seller

Carolina Aircraft
Phone: +1 (336) 665-0300

Quick info

Listing type: For sale

Description

N-Number Just Changed to N88VV (Owner Keeping his Personalized N-Number)

- Price Includes Bonanza School

Please contact Bryan Tuttle for more information.

Beechcraft G36 Bonanza

\$995,000

Add Details

Manufacturer year: 2014

Serial number: E-4037

Registration number: N88VV

Total airframe time: 650

Additional information

Airframe:

TTAF: 650

4,011 GW Increase; Useful Load: = 1,235 Lbs.

Propulsion:

SMOH: 0 (December 2025)

SPOH: 0 (December 2025)

Inspection:

Hangared
Like New Condition
Excellent Maintenance

Avionics:

Garmin G1000 Fully Integrated Glass Panel Flight Deck
NAV/COMM's: Garmin GIAW 63W NAV/COM/GPS w/ Glidescope
Audio Panel: Garmin GMA-1347 Audio and Marker Beacons
GPS: Dual Garmin IFR - C129A approved GPS
PFD Moving Map: Garmin 10.4" high resolution Primary Flight Display
MFD Moving Map: Garmin 10.4" high resolution multi-function Display
AHRS 1: Garmin GRS-77 Altitude Heading and Reference System
EIS: Engine Indication Advisory System on MFD or PFD
Transponder: Garmin GTX 330ES w/ ADS-B OUT
Active Traffic: Garmin 820 Active Traffic System
XM Weather: Garmin GDL 69A WX Weather & XM Music
Chartview: Jeppesen Chartview (Subscription Required)
TAWS-B: Integrated TAWS Terrain Awareness System
AutoPilot: Garmin GFC 700 Flight Control System w EFIS PFD
ALT Preselect: Garmin Altitude and Vertical Speed Selector in GFC-700

Additional equipment:

Ice Shield Deice Boots
Windshield Hot Plate
AmSafe Air Bag System
MT Composite Hot Prop
6 Place Integrated O2 System!
Osborn 20 GL Tip Tank System
New Style Electric A/C System

Beechcraft G36 Bonanza

\$995,000

New Executive Writing Desk
LED Lighting All Around!
WAAS & Synthetic Vision
Co-Pilot Braking System
6-Place Intercom System
Bendix King KLR 10 AOA Ind
Hydraulic Door Steward
Internally Lighted Instruments
Club Seating – 6 Seats
Electric Elevator Trim
Control Wheel Map Light
External Power Receptacle
Reversible Club Seating – 6 Seats
2ND Alternator B & C System
Standby Altimeter & Airspeed Ind.
Entrance Door Courtesy Lights
Strobe Lights – 3 LED Light System
Standby Attitude Ind w/ Backup Power
Artex ME 406 ELT System

Interior:

Tan Leather Seating with Tan Carpet, 6 Place Intercom, Cup Holders. Gorgeous "Like New" Condition

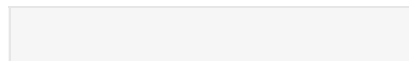
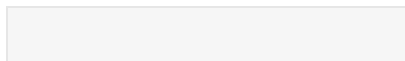
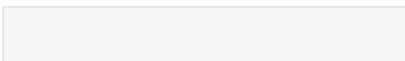
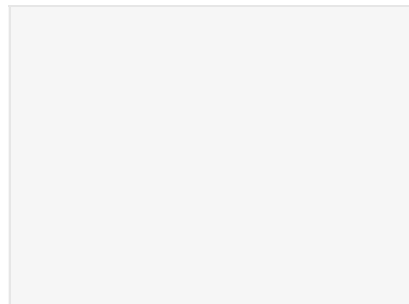
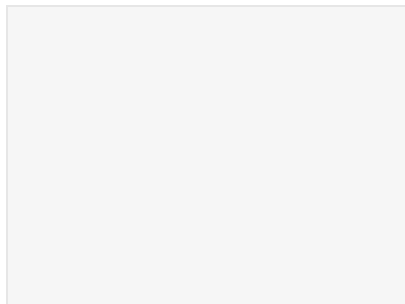
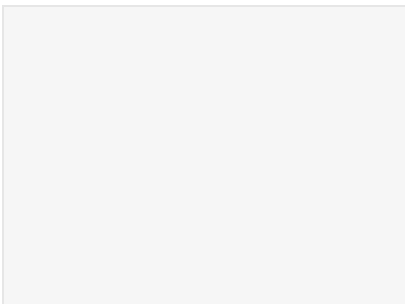
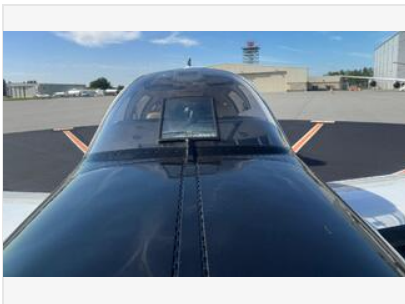
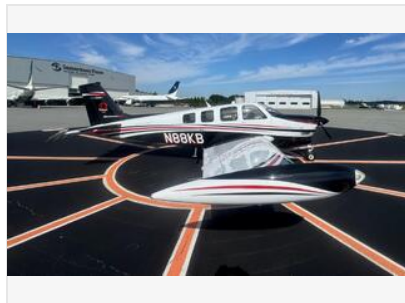
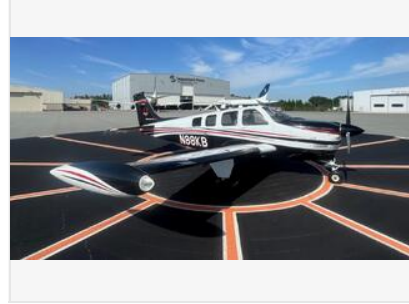
Exterior:

Matterhorn White with Black & Toreador Red Striping in Gorgeous "Like New" Condition

Beechcraft G36 Bonanza

\$995,000

Listing images



Beechcraft G36 Bonanza

\$995,000

