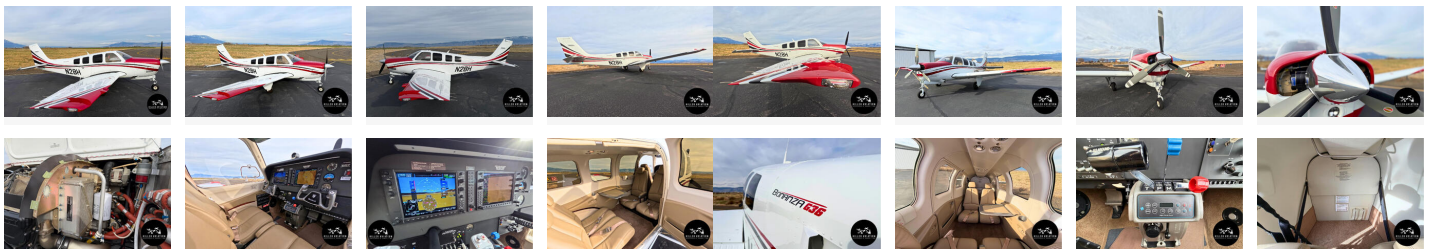


## Beechcraft G36 Bonanza

**\$899,000**



### Listing

**Listing url:** <https://aircraftforsale.com//aircraft/single-engine-piston/beechnraft/g36-bonanza/97850-la-grande-oregon-united-states/beechnraft-g36-bonanza-for-sale-601018>

**Listing reference number** #601018

### Seller

Hiller Aviation Brokerage & Consulting  
Phone: +1 (206) 423-2913

### Quick info

**Listing type:** For sale

### Description

Hiller Aviation Brokerage & Consulting is pleased to offer this immaculate 2018 Beechcraft G36 - a low-time, professionally flown aircraft and an excellent year-end tax solution! With Textron discontinuing G36 production, this well-kept aircraft represents a rare opportunity. Full factory support continues for the entire fleet!

**\*\*Financing and Delivery Available. N-Number will be retained\*\***

**AIRFRAME:**

- AFTT 296
- Useful Load 1,060 lbs
- Annual Due March 2025
- Complete & Consecutive Logs
- No Damage History

## Beechcraft G36 Bonanza

**\$899,000**

- No Damage History
- Always Hangared
- Based in La Grande, OR (KLGD)

### ENGINE:

- Continental IO-550-B (300 HP)
- 296 Hours SNEW

### PROP:

- Hartzell 3-Blade Electric De-Ice Propeller
- Polished Spinner
- 296 Hours SNEW

### AVIONICS:

- Garmin G1000 NXi Integrated Flight Deck
- Garmin GFC700 3-Axis Autopilot w/ Flight Director
- Dual Garmin GIA63W WAAS GPS/NAV/COM
- Garmin GTX345R ADS-B Transponder w/ Flight Stream 510
- Garmin GTS800 Active Traffic
- Garmin Synthetic Vision Technology (SVT)
- Garmin GDL69A XM Weather & XM Audio
- Garmin SafeTaxi & FliteCharts
- Terrain Awareness & Warning System
- Electronic Standby Attitude Indicator
- Artex 406 MHz ELT

### ADDITIONAL EQUIPMENT:

- Digital Climate Control
- Wing Sump Eagle Assembly (Installed 2020)
- B Standby Alternator
- Heated Pitot
- Electric Pitch Trim
- Copilot Brakes / Adjustable Pedals
- Rosen Sun Visors
- Super Soundproofing
- Executive Writing Table
- Lighted Cupholders
- New-Style Club Seating for 6
- LSI LED Landing/Taxi/Nav/Beacon Lights

### EXTERIOR:

- Matterhorn White with Cardinal Red & Black Metallic Trim (10/10)

### INTERIOR:

- Papyrus Luxor Package (10/10)
- Six-Seat Club Configuration

### Disclaimer:

The Seller and Agent provide the information herein solely to assist prospective buyers in their evaluation of the aircraft. While every effort has been made to ensure accuracy, errors and omissions may occur. All specifications, equipment, features, times, statuses, and conditions are the sole responsibility of the Buyer to verify prior to closing. Neither Seller nor Agent shall be held liable for any discrepancies, errors, or omissions discovered after closing, nor are they obligated to provide any equipment, features, inspections, or other considerations beyond what is expressly agreed upon. All aircraft equipment and prices are subject to change.

## Beechcraft G36 Bonanza

**\$899,000**

agreed upon. Aircraft, equipment, and prices are subject to change without notice, and are subject to prior sale, withdrawal from the market, or unavailability.

---

### Add Details

**Manufacturer year:** 2018

**Serial number:** E-4117

**Registration number:** N2BH

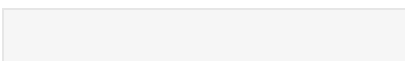
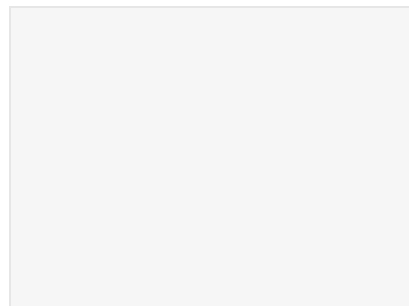
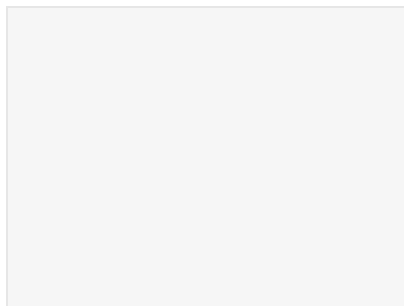
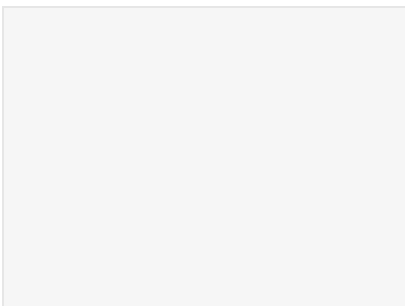
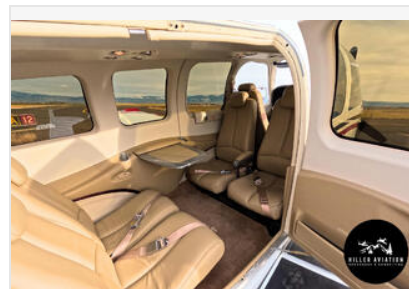
**Total airframe time:** 296

---

## Beechcraft G36 Bonanza

\$899,000

### Listing images



## Beechcraft G36 Bonanza

**\$899,000**

